

Citrix Workspace App for Mac

V 2002

3/16/2020

Contents

- Summary..... 2
- Requirements 2
 - Internet Connection 2
- Installation..... 3
- Using Launchpad 7
- Troubleshooting 8
 - Add Account Prompt..... 8

Summary

Citrix Workspace App is the application required to use Launchpad.humana.com to access Humana applications and desktops. The following document outlines the steps to install, configure, and troubleshoot the Citrix Workspace App for macOS.

Workspace App is installed and configured automatically on Humana provided laptops and PCs.

Requirements

- **Operating System:** macOS 10.13 (High Sierra) or newer
- **Browser:** Safari, Chrome (latest version), Firefox (latest version)
- Administrator access

Internet Connection

For the best experience, Internet connection speeds should be at least 10Mbps download and 1Mbps upload or higher.

Equally as important as the connection speed is the reliability of the connection. A business class connection is not required but recommended for work at home associates that rely on Launchpad. An unreliable Internet connection can cause disconnections and slow response in applications and desktops accessed through Launchpad. If you continually experience slowness or disconnections through Launchpad, it's recommended that you contact your Internet Service Provider to verify the connection.

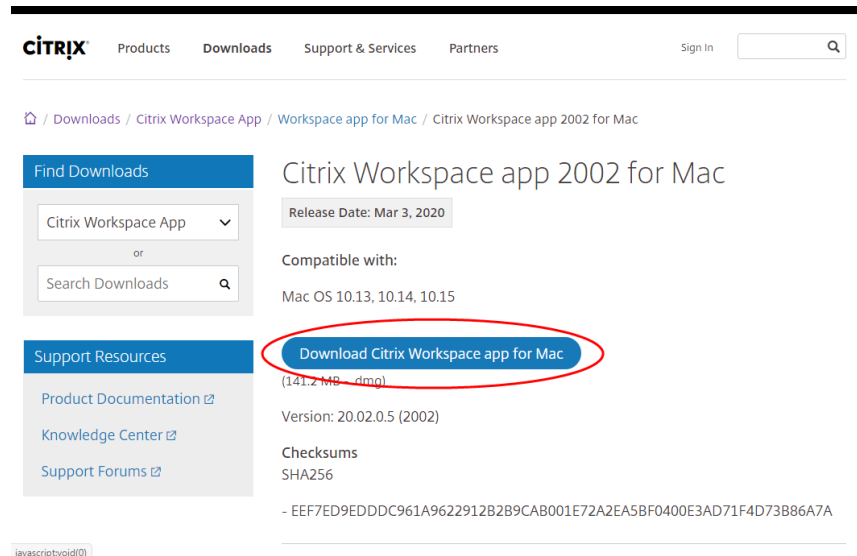
Cellular internet connections, such as cell phones or personal hotspots, are not recommended for critical or long working sessions. While the connection speed may meet the minimum requirements, these connections are often less reliable

Satellite Internet connections are not supported.

For workstations and laptops, a wired connection will typically provide a more reliable connection than Wifi.

Installation

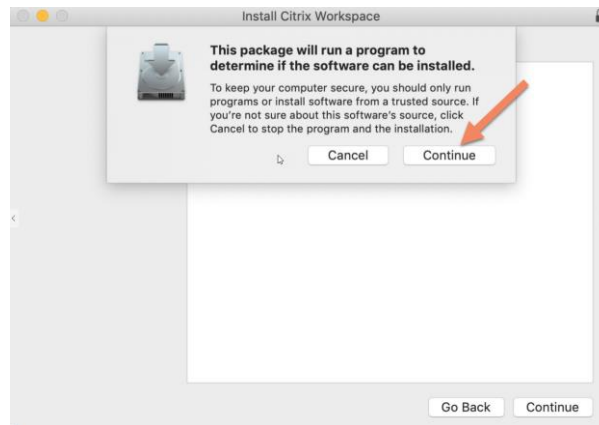
1. Browse to <https://www.citrix.com/downloads/workspace-app/mac/workspace-app-for-mac-latest.html> and click the “Download Citrix Workspace app for Mac” button.



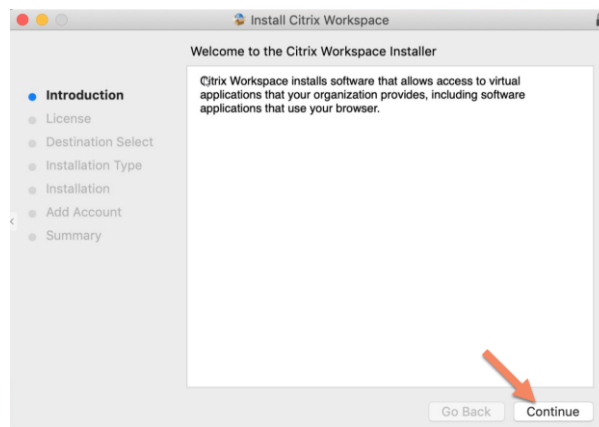
2. When the download is complete, open Finder and browse to the Downloads folder. Double-click “CitrixWorkspaceApp.dmg” to start the installation.
3. At the Citrix Workspace window, double-click “Install Citrix Workspace”



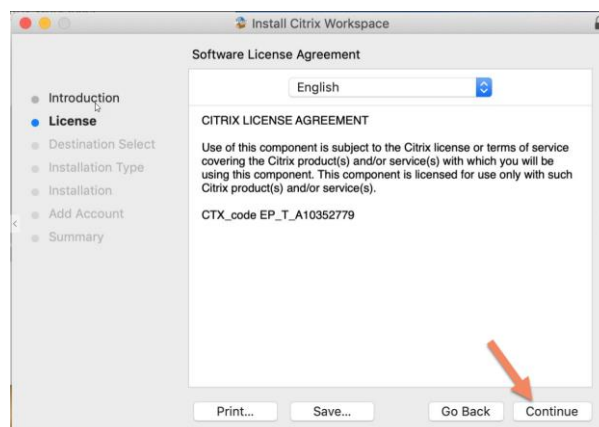
4. Click Continue at the “This package will run a program...” prompt



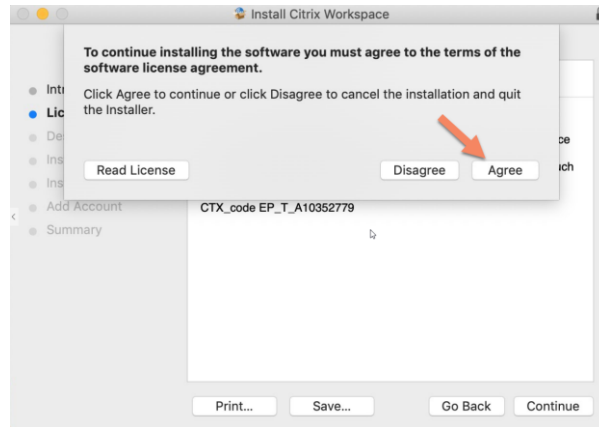
5. Click Continue at the Introduction screen



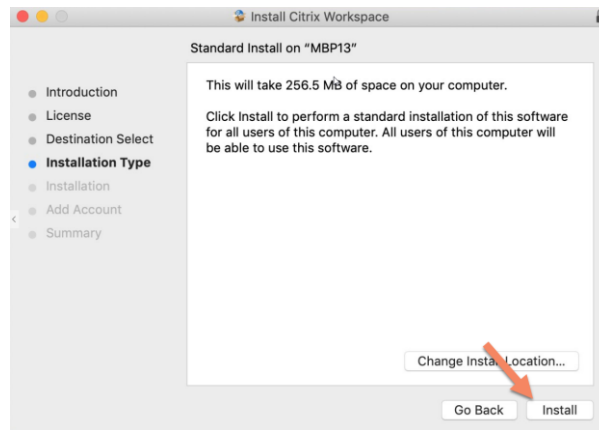
6. Click Continue at the License screen



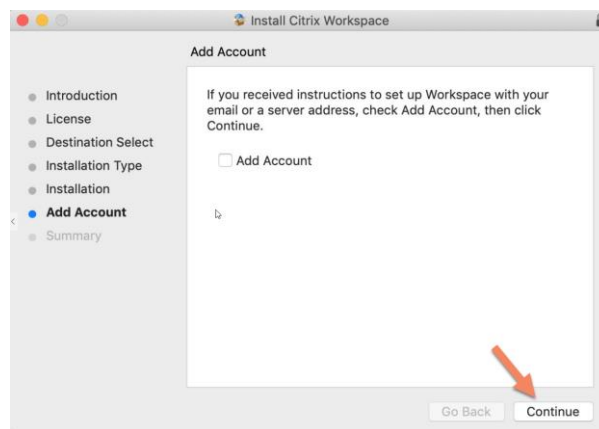
7. Click Agree at the License Agreement prompt



8. Click Install at the Installation Type screen

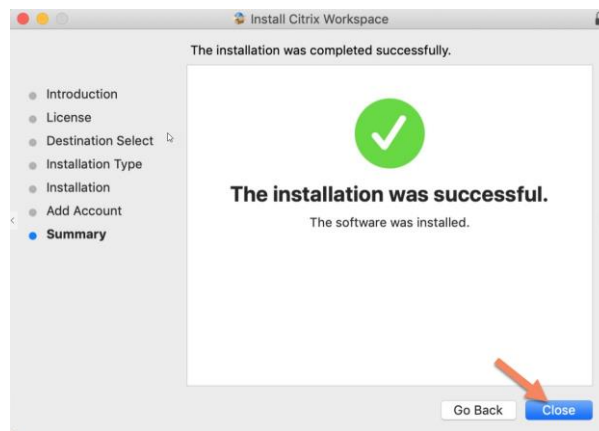


9. Ensure that Add Account is UNCHECKED and click Continue



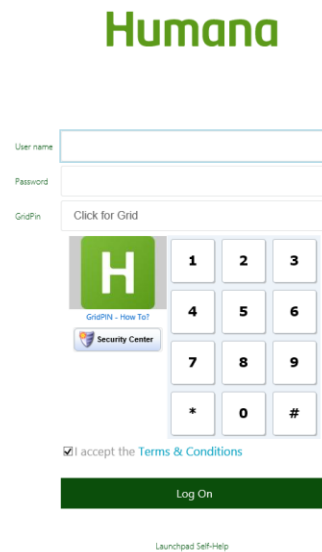
10. If prompted, enter your computer account password

11. Click Close at the Installation Successful screen



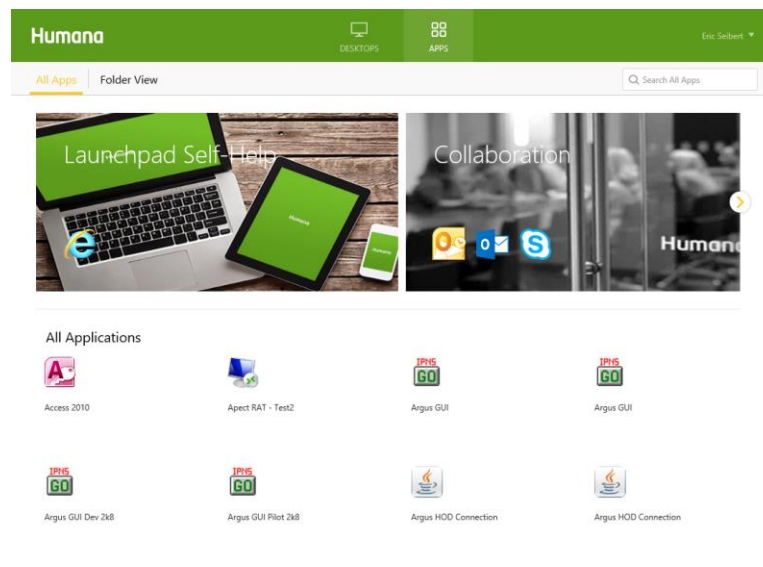
Using Launchpad

1. Open your browser and enter <https://launchpad.humana.com> in the address bar. Enter your username, password, and GridPin and click the Log On button.



The image shows the Humana login page. At the top, the word "Humana" is displayed in a green, sans-serif font. Below the logo, there are three input fields: "User name", "Password", and "GridPin". The "GridPin" field is labeled "Click for Grid" and is followed by a 3x3 grid of buttons containing the numbers 1 through 9, an asterisk (*), 0, and a hash symbol (#). To the left of the grid is a large green square with a white letter "H". Below the grid, there is a "Security Center" button and a checkbox labeled "I accept the Terms & Conditions". At the bottom of the form is a green "Log On" button. Below the button, the text "Launchpad Self-Help" is visible.

2. Click an application icon to start that application. To access available desktops, click the "Desktops" tab at the top of the screen. Click a desktop icon to start that desktop.



The image shows the Humana Launchpad interface. At the top, there is a green header bar with the "Humana" logo on the left, "DESKTOPS" and "APPS" tabs in the center, and the user name "Eric Seibert" on the right. Below the header, there are two tabs: "All Apps" (selected) and "Folder View". A search bar labeled "Search All Apps" is on the right. The main content area features a carousel of desktops. The first desktop is titled "Launchpad Self-Help" and shows a laptop, tablet, and smartphone. The second desktop is titled "Collaboration" and shows a group of people in a meeting. Below the carousel, there is a section titled "All Applications" with a grid of application icons. The icons are: "Access 2010", "Apect RAT - Test2", "Argus GUI", "Argus GUI", "Argus GUI Dev 2k8", "Argus GUI Pilot 2k8", "Argus HOD Connection", and "Argus HOD Connection".

Troubleshooting

Add Account Prompt

If you receive the following prompt to Add an Account, you may ignore this and click Close. You do not need to add an account to use Launchpad.humana.com. Open your browser, enter <https://Launchpad.humana.com> in the address bar and follow the steps above for using Launchpad.

